



2025

## KARNATAKA RADIOLOGY EDUCATION PROGRAM

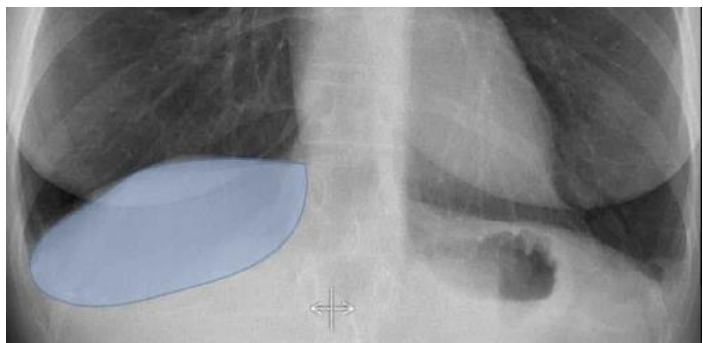
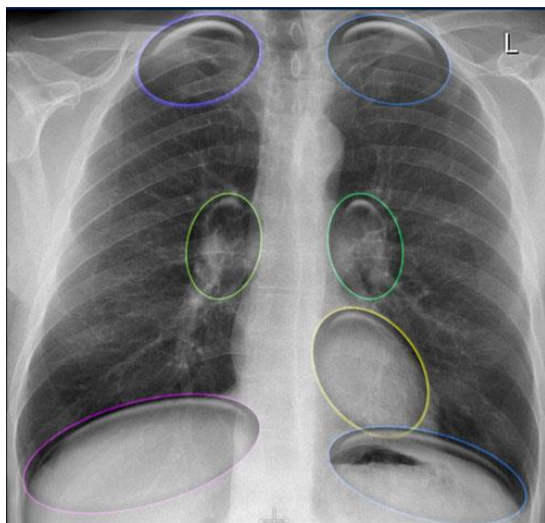
### Hidden areas

There are some areas that need special attention, because pathology in these areas can easily be overlooked.

These areas are also known as the hidden areas:

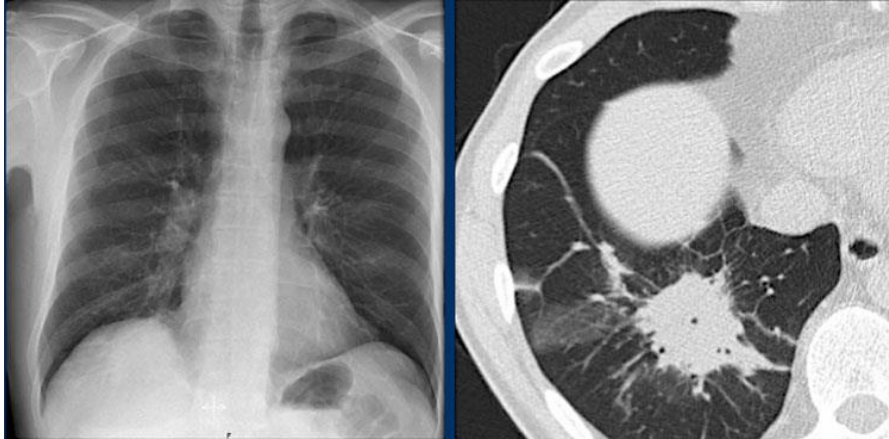
- Apical zones
- Hilar zones
- Retrocardial zone
- Zone below the dome of diaphragm

[Notice that there is quite some lung volume below the dome of the diaphragm, which will need your attention (blue area).-image 2]



### Hidden areas (2)

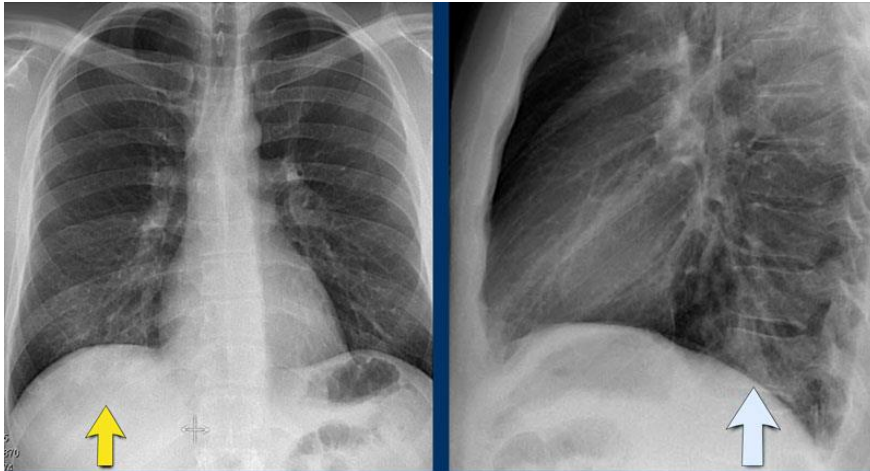
Here an example of a large lesion in the right lower lobe, which is difficult to detect on the PA-film, unless when you give special attention to the hidden areas.



### Hidden areas (3)

Here a pneumonia which was hidden in the right lower lobe mainly below the level of the dome of the diaphragm (yellow arrow).

Notice the increase in density on the lateral film in the lower vertebral region.

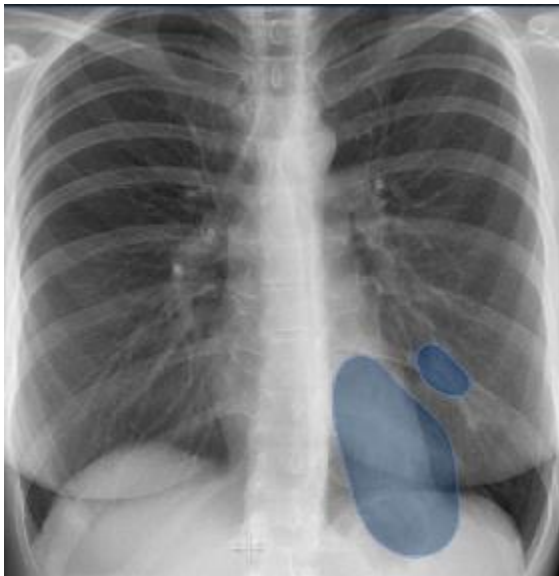


**Hidden areas (4)**

**First study the CXR.**



**Notice the subtle increased density in the area behind the heart that needs special attention (blue area).**



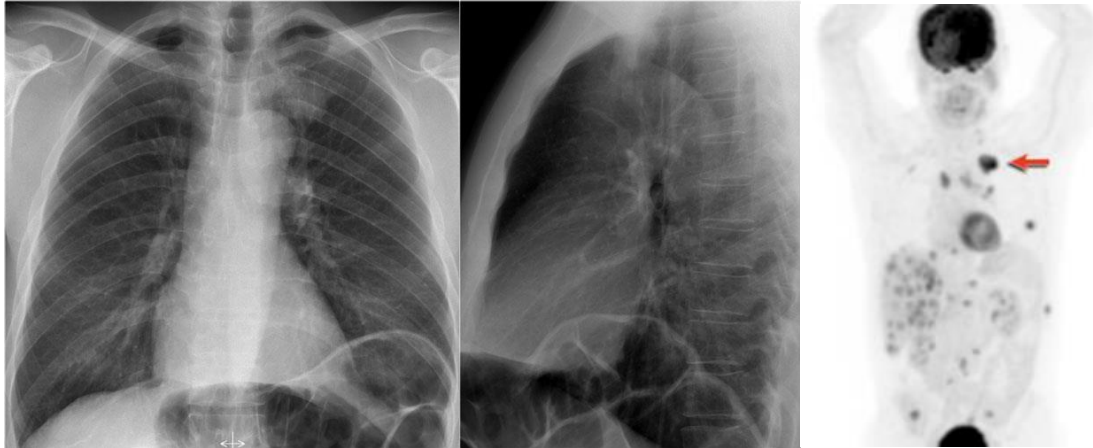
**This was a left lower lobe pneumonia**

We know that in some cases there is an extra joint in the anterior part of the first rib which may simulate a mass.

However this is also a hidden area where it can be difficult to detect a mass.

In this case a small lung cancer is seen behind the left first rib.

Notice that it is also seen on the lateral view in the retrosternal area.



The PET-CT demonstrates the tumor (arrow) which has already spread to the bone and liver.

*Compiled by: Dr Pravin G U Principal, Prof.RadioDiagnosis . Sri Chamundeshwari Medical college Hospital & Research Institute,Channapatna,Karnataka. President IRIA KSC*

*Ref : <https://radiologyassistant.nl/>*